



Big Dutchman

EUROVENT Parents



**The ventilated manure belt battery
for layer breeders**

EUROVENT Parents – the ventilated manure belt battery for layer breeders, different flock sizes, lively birds and clean hatching eggs



Apart from the EUROVENT laying battery and our EUROVENT Starter for rearing, Big Dutchman's EUROVENT Parents is the ideal cage battery for layer breeders. It allows variable flock sizes, since a single cage can be up to 2.4 m long in stages of 60 cm. The width of a single cage extends from the trough on one side to the trough on the other side. In the centre of the cages is a rugged perch offering the males in particular an opportunity to follow their natural behaviour. The individual cages are separated by closed partitions promoting quiet in the house and protecting the plumage. General characteristics of EV-P are a high number of birds and low labour requirements.

Advantages

- healthy and lively hens and males;
- significantly reduced salmonella risk;
- clean hatching eggs;
- uniformly high laying performance;
- better feed conversion;
- lower mortality rate;
- much higher bird numbers;
- high effectiveness due to automated feed and water supply, egg collection and manure removal = approx. 50 % labour savings;
- significant reduction in fly population;
- extremely low ammonia and odour emissions = significantly improved house air;
- dry manure with up to 60 % dry matter content which can be conveniently spread and stored.

Performance data achieved with EUROVENT Parents:

64 th week of life	
Laying performance per hen housed	273
Hatching eggs per hen housed	249
Average hatching performance (%)	76
Female chicks per hen housed	95
Mortality rate in week 64 (%)	4

Dry manure – unbeatable from an economic and ecological point of view

Continuously welded manure belts collect the manure from under the cages. It can be stored and ventilated in situ for an interim period of up to 7 days. The pre-warmed air from the air duct immediately dries the manure and does not allow ammonia to be created. On manure removal, the manure from all tiers drops onto a cross belt, which conveys it out of the house either into the manure store or directly onto a transport vehicle by means of a conveying belt. Manure scrapers clean the PP belt on each tier very thoroughly. The manure chute at the end of the cage row ensures dust-free removal without spillage.



Feed supply

The Big Dutchman chain feeding system is a highly reliable and cost-effective feeding system. The CHAMPION feed chain carries the feed to the birds evenly and with great care. It is driven by one drive per feed circuit without any additional transfer elements = high efficiency, low maintenance requirements. The deep trough avoids feed losses.

Water supply

The nipple pipes are located at both sides of the cage. They are installed at different heights for males and hens. Nipples are made of stainless steel and have a drip water cup. This keeps the manure belts dry.

Bottom wire

The bottom wire is placed on tension wires that are tensioned over the entire length of the system. This ensures great flexibility, ensuring only a minor proportion of cracked and broken eggs. The bottom wire itself can have different mesh sizes: 1 x 1 inch = more stability for hens and males. In the trough area, mesh sizes

amount to 1 x 1.5 inch = more flexibility for the egg deposit and eggs rolling-off onto the longitudinal belt. Overall, this means higher hatching rates and better shell quality.

Cage front

The cage front consists partly of a fixed grid separated by vertical grill bars and partly of sliding grids that can be opened completely and are separated horizontally. This offers the females as well as males optimum conditions for feed consumption. The grill bar division can be chosen freely.



Footrail

The flat-shaped footrail, made of stainless steel, encourages egg deposit in the trough area. This means short rolling-off distances and thus less cracked eggs. Moreover, the presence of a footrail prevents manure from falling into the cage below and protects the eggs from being eaten.

Egg-Saver

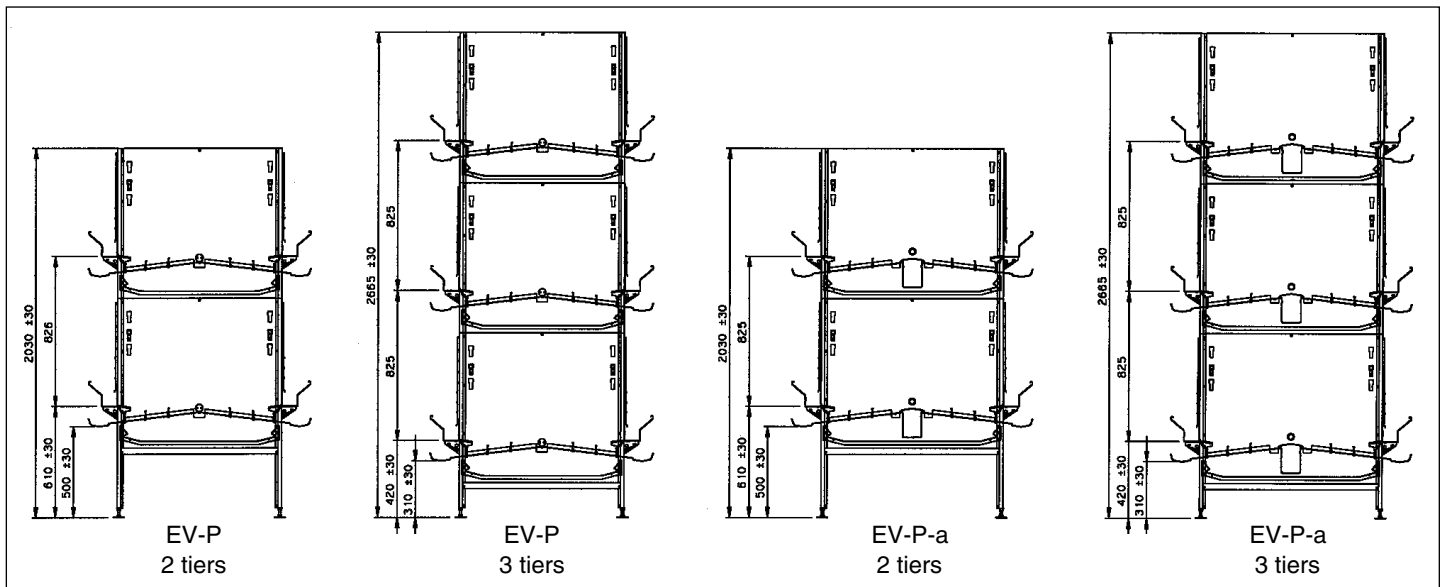
Optionally, Big Dutchman offers its Egg-Saver for even smoother rolling-off of eggs onto the longitudinal belt.

Manure belt and air duct

The air duct is located directly above the manure belt and thus ensures optimum manure ventilation = significant reduction of ammonia emissions. During manure removal, the troughed manure belt ensures loss-free manure transport onto the cross belt.



Cage cross sections and technical data of EUROVENT Parents



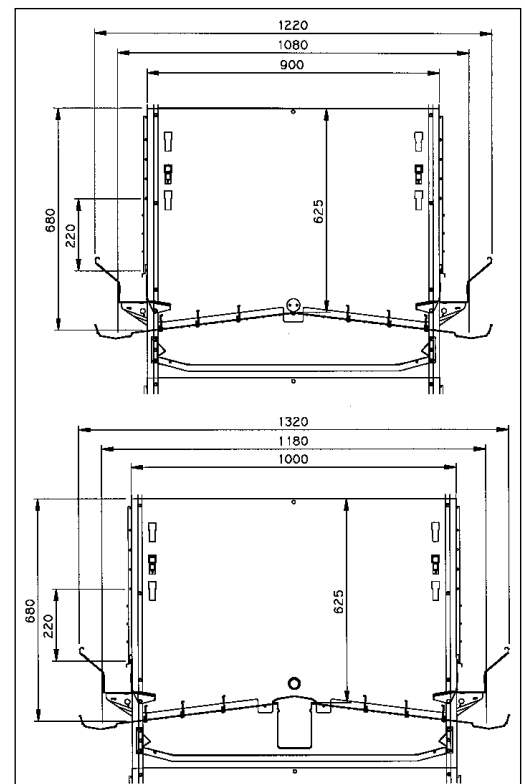
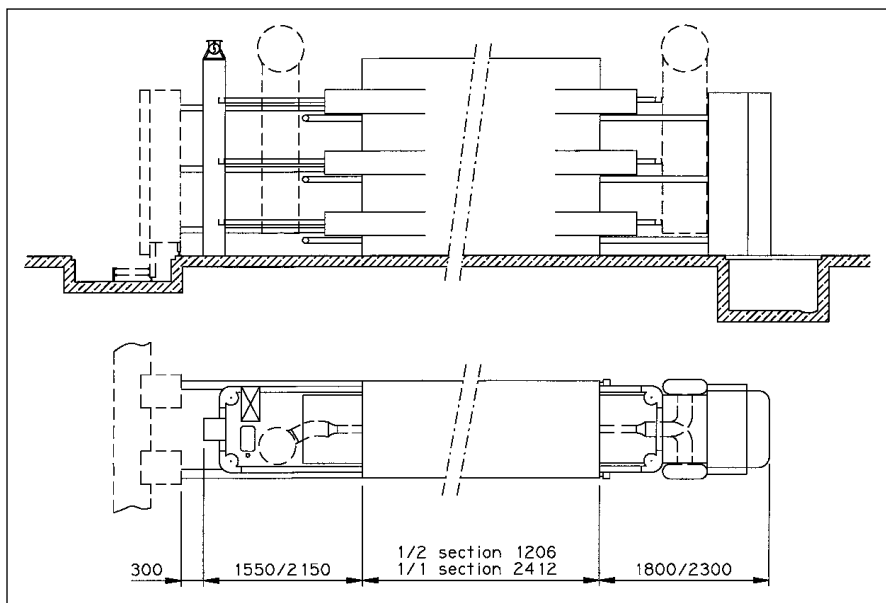
Cage dimensions

Type of system		EV-P	EV-P-a
Length	mm	603 / 1206 / 1809 / 2412 (variable in steps of 603 mm)	
Width (from trough to trough)	mm	900	1000
Height (centre)	mm	625	625
Height (outside)	mm	680	680
Surface recommended/bird	cm ²	>600	>600

Dimensions cage section

Length	mm	2412	2412
Width	mm	1220	1320
Height (2 tiers)	mm	2030	2030
Height (3 tiers)	mm	2665	2665

Upon request we can supply you with 4, 5 or 6 tiers for both system types of EUROVENT Parents. In this case, an intermediate ceiling, for checking, is installed.



Cage cross section EV-P and EV-P-a



Big Dutchman

Big Dutchman International GmbH • P.O. Box 1163 • D-49360 Vechta, Germany
Tel. +49 (0)4447/801-0 • Fax +49 (0)4447/801-237 • E-Mail: big@bigdutchman.de